

# ***RESIDENZA BRIANTINA***

*Via Briantina, Seregno (MB)*

**COMAX** s.r.l.  
Sviluppo immobiliare

**citterio case**  
intermediazioni immobiliari





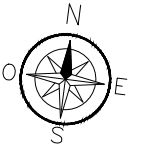






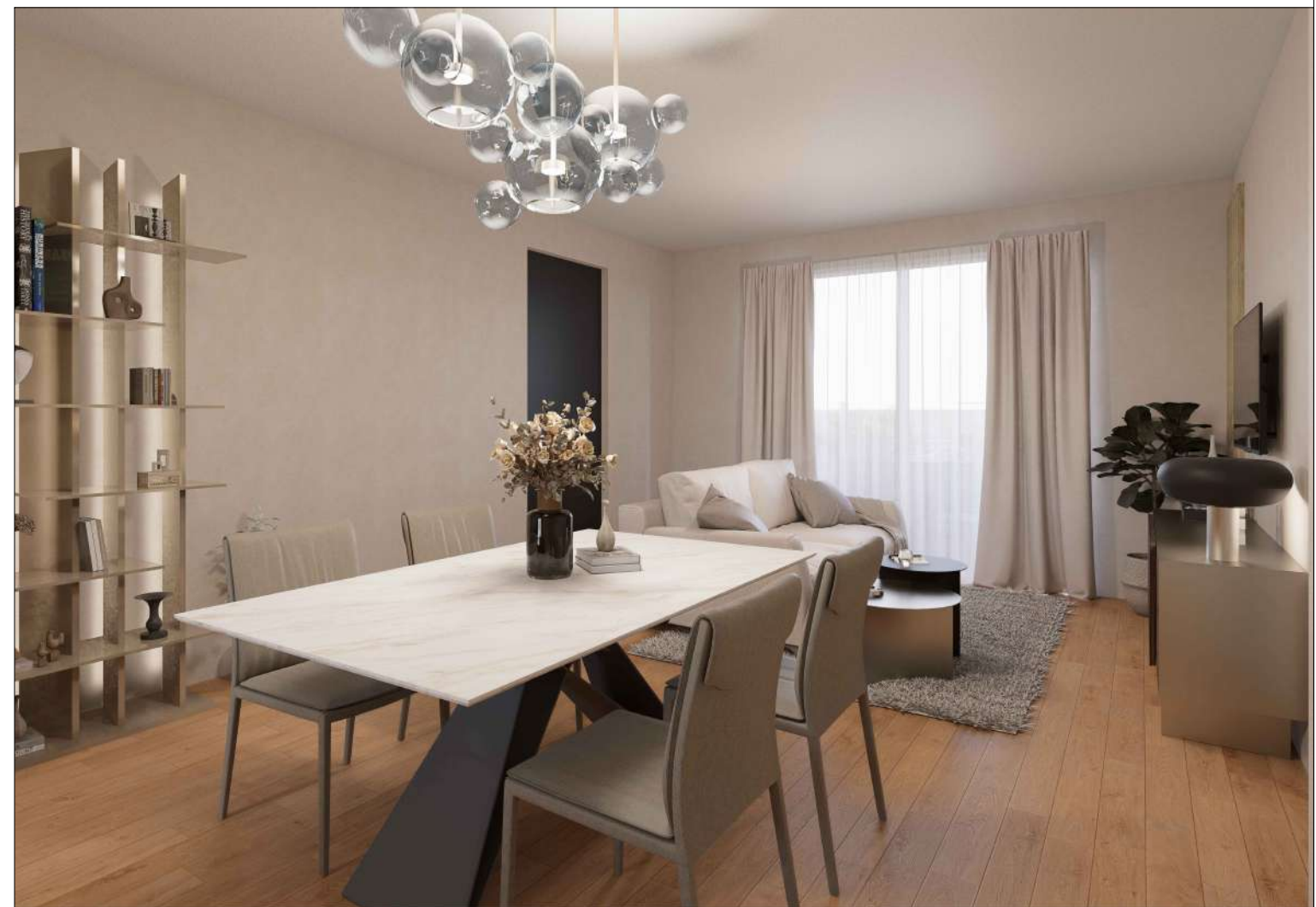


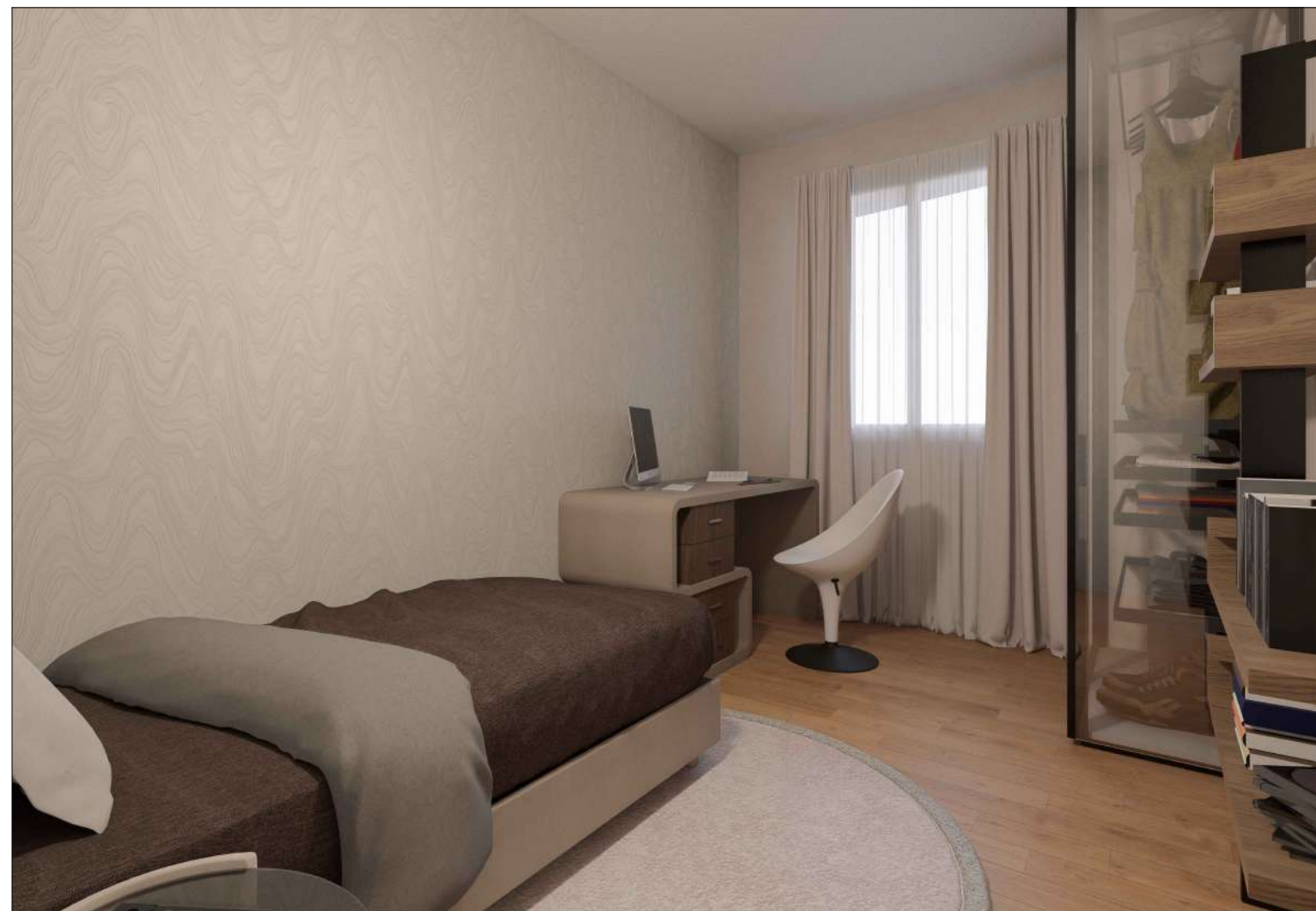
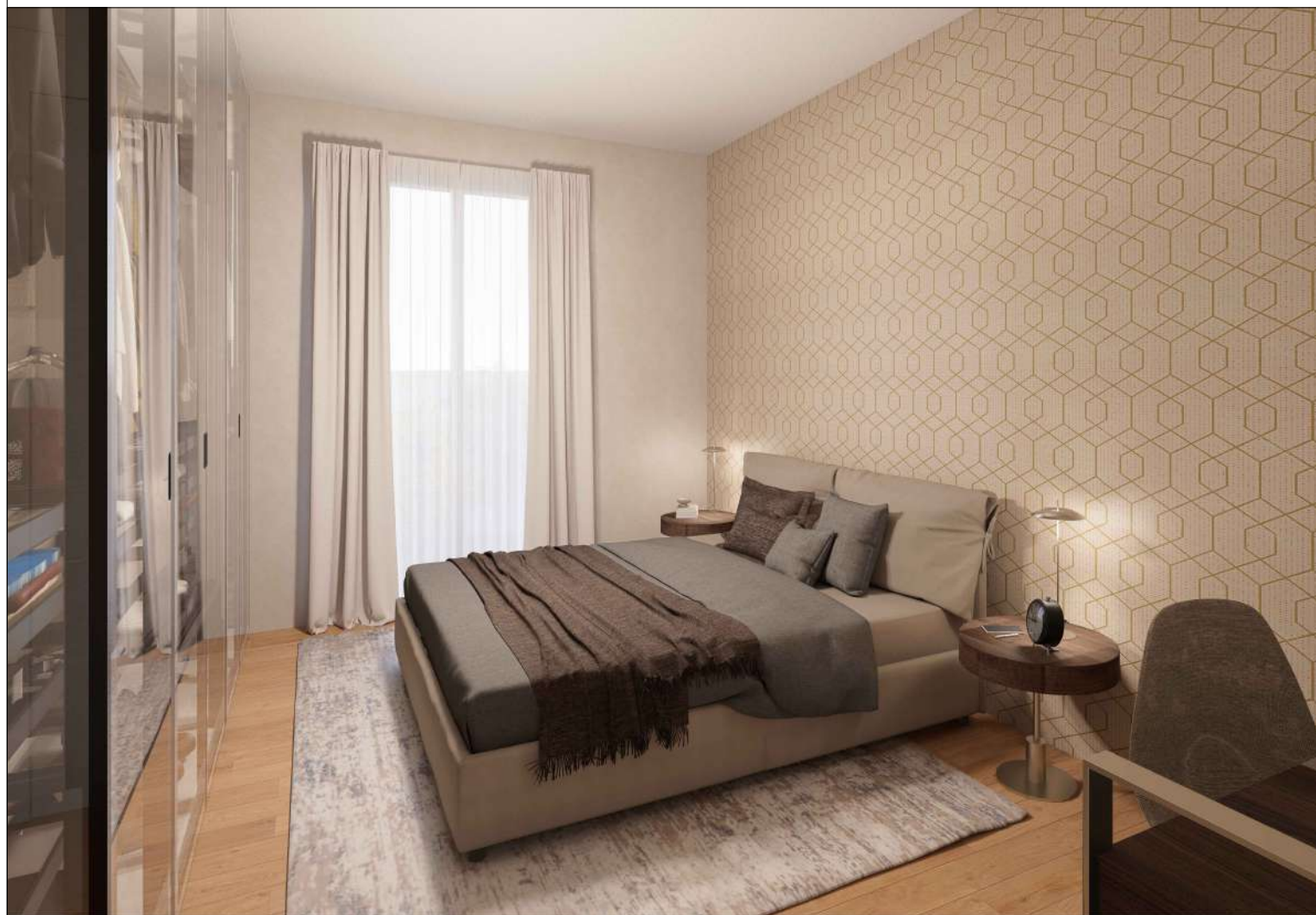
## UNITA' N°1 - PIANO TERRA



Locali: 3  
Superficie abitazione: 92,00 mq  
Superficie marciapiedi: 44,00 mq  
Giardino: 152,00 mq

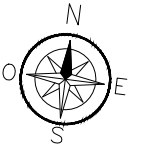
Totale mq commerciali: 112,00 mq  
Totale mq area esterna: 196,00 mq



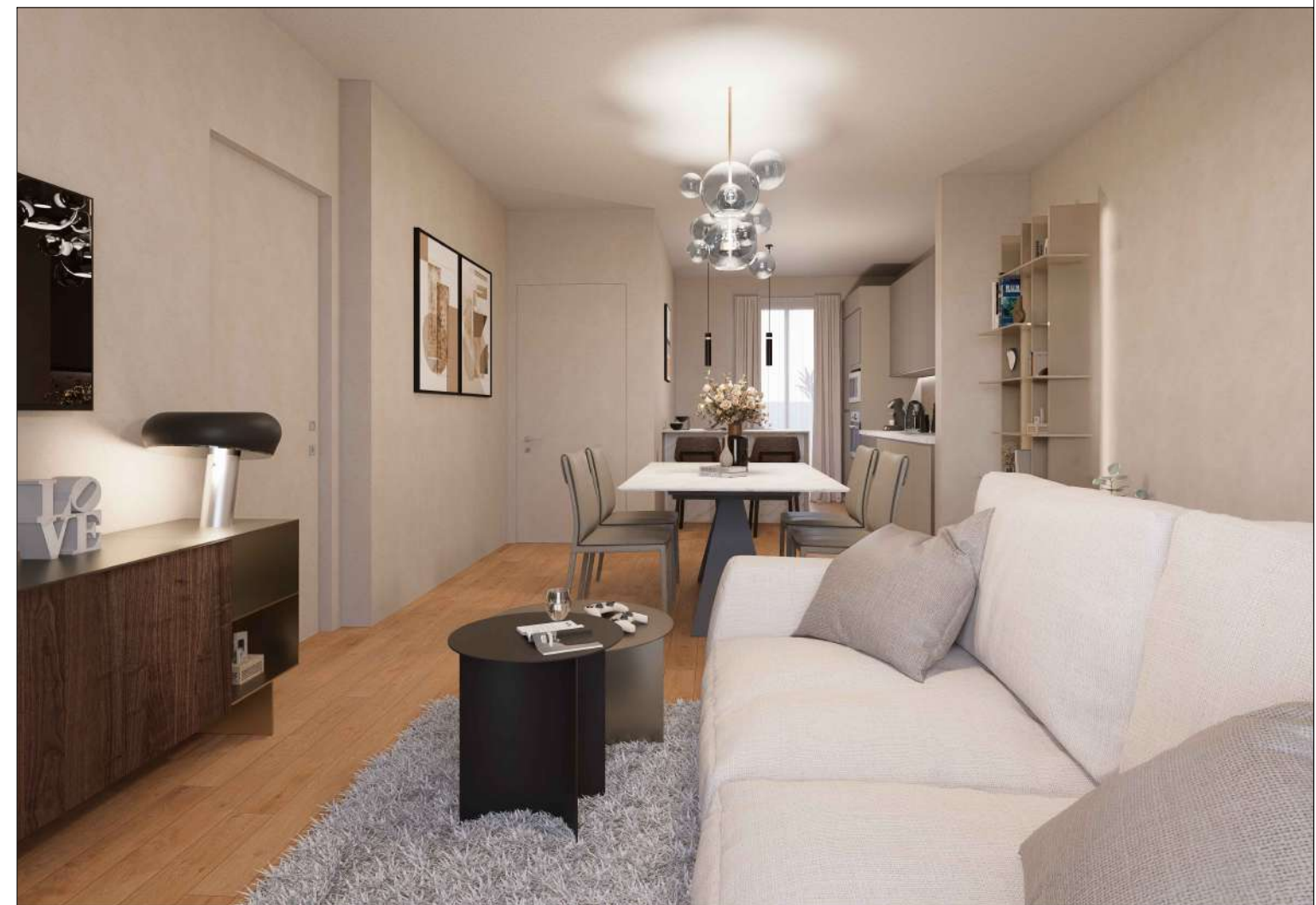


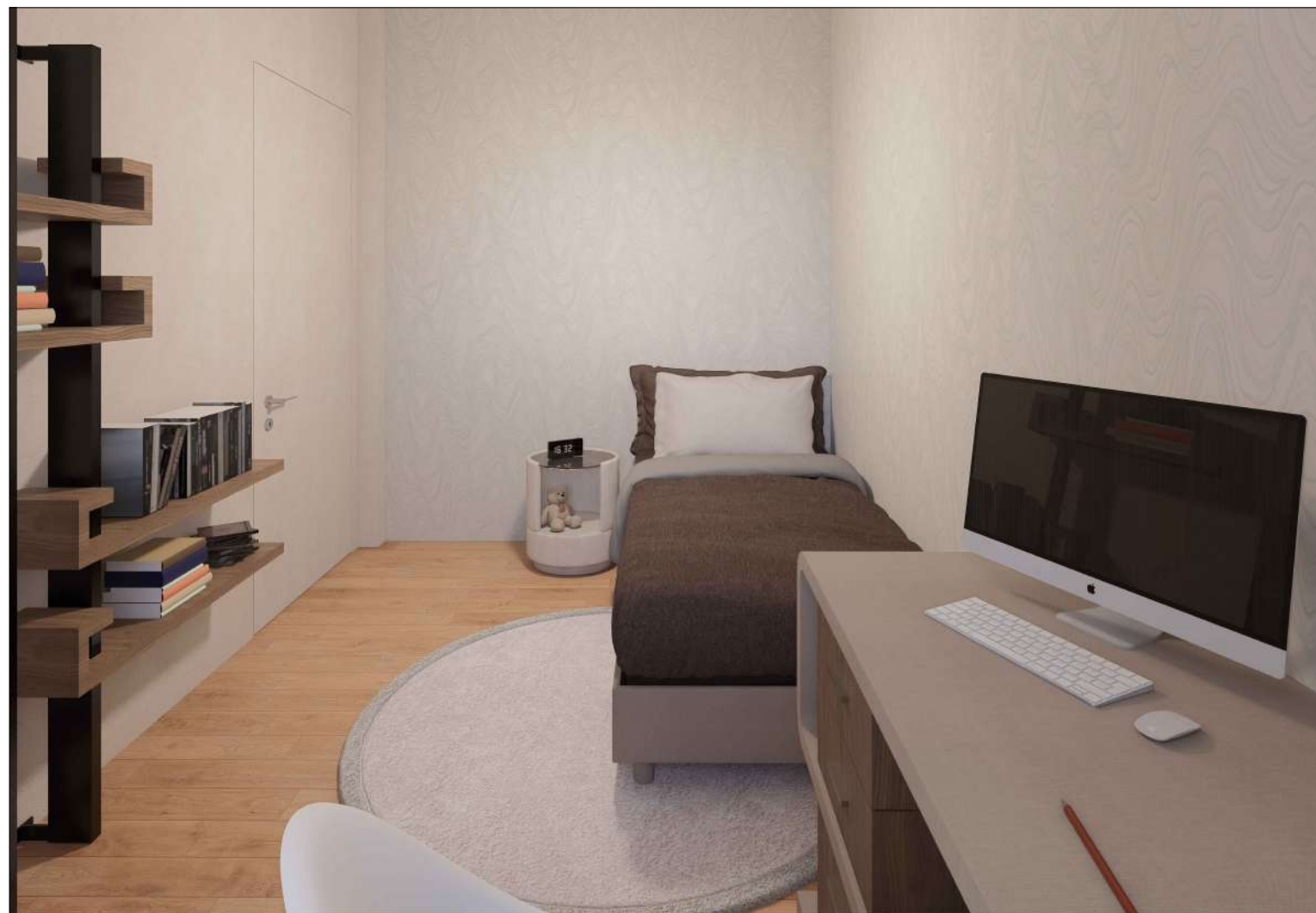
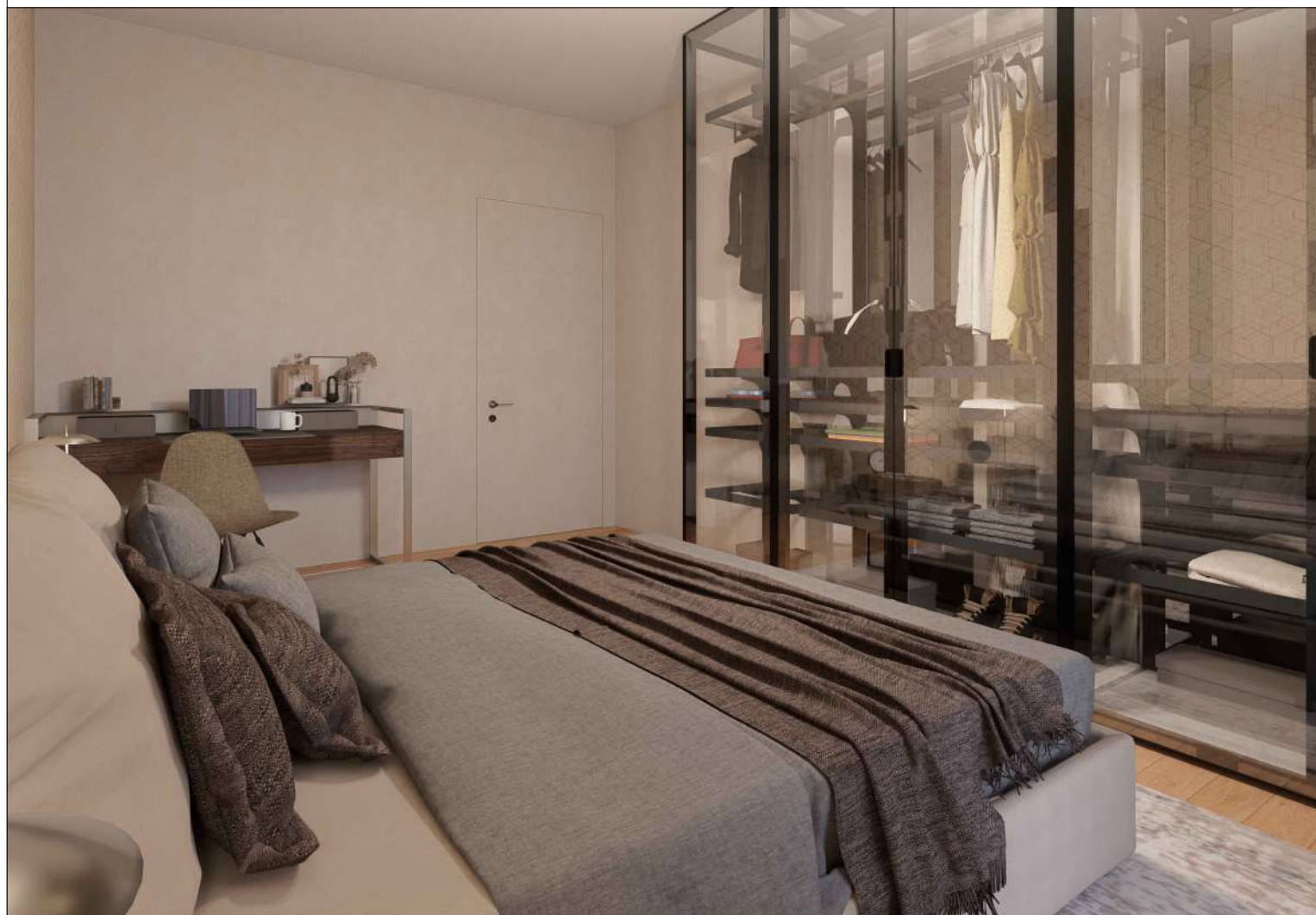


## UNITA' N°2 - PIANO PRIMO



Locali:	3
Superficie abitazione:	88,20 mq
Superficie balconi:	19,42 mq
Superficie loggia:	10,60 mq
Totale mq commerciali:	103,00 mq
Totale mq sfoghi esterni:	30,02 mq (da calcolare al 50%) = 15,00 mq







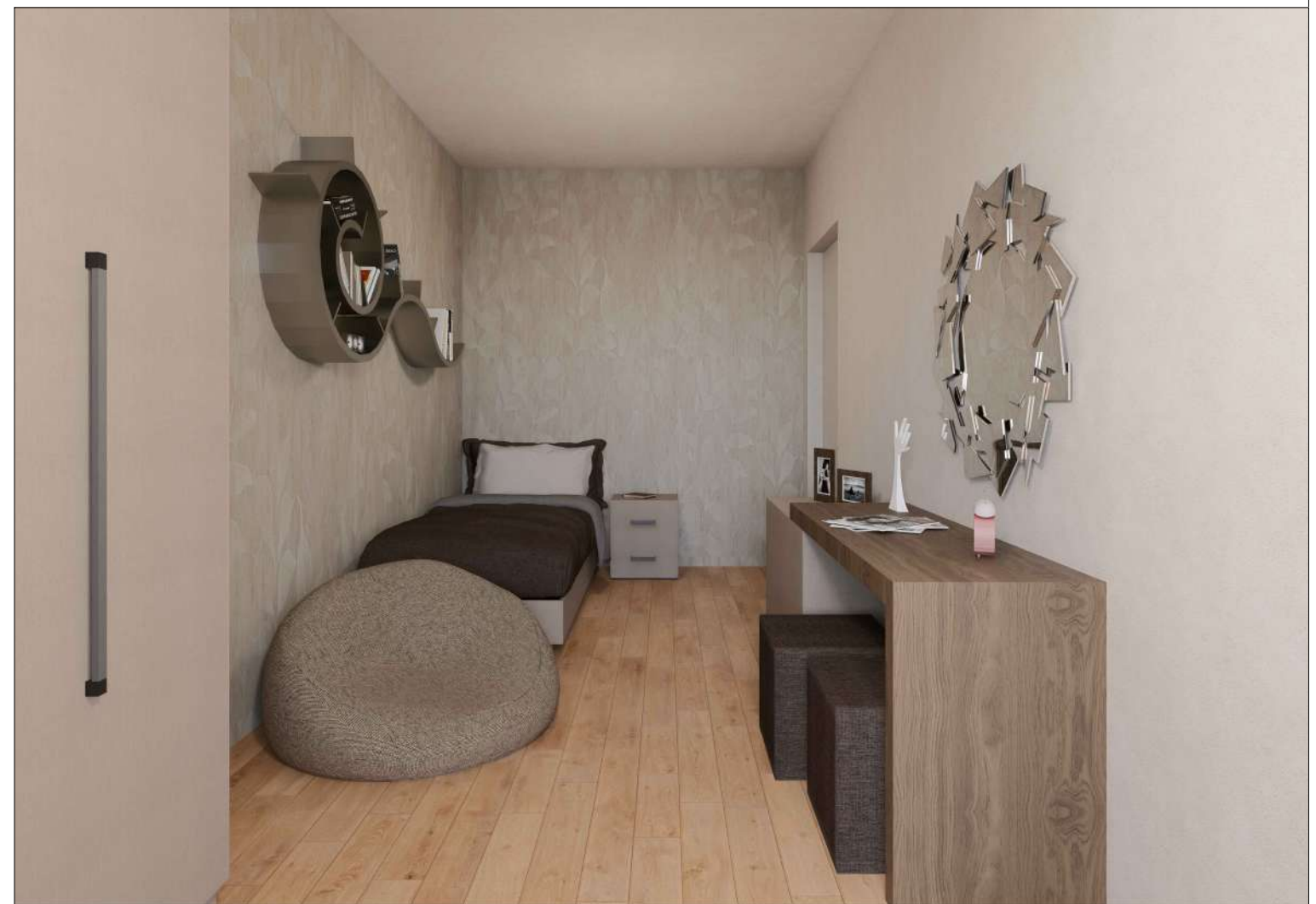
## UNITA' N°3 - PIANO PRIMO



Locali: 3  
Superficie abitazione: 93,18 mq  
Superficie balconi: 22,47 mq (da calcolare al 50%) = 11,00 mq  
Superficie terrazzo: 50,47 mq (da calcolare al 30%) = 15,00 mq

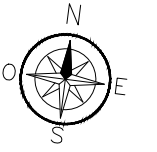
Totale mq commerciali: 119,00 mq  
Totale mq sfoghi esterni: 26,00 mq



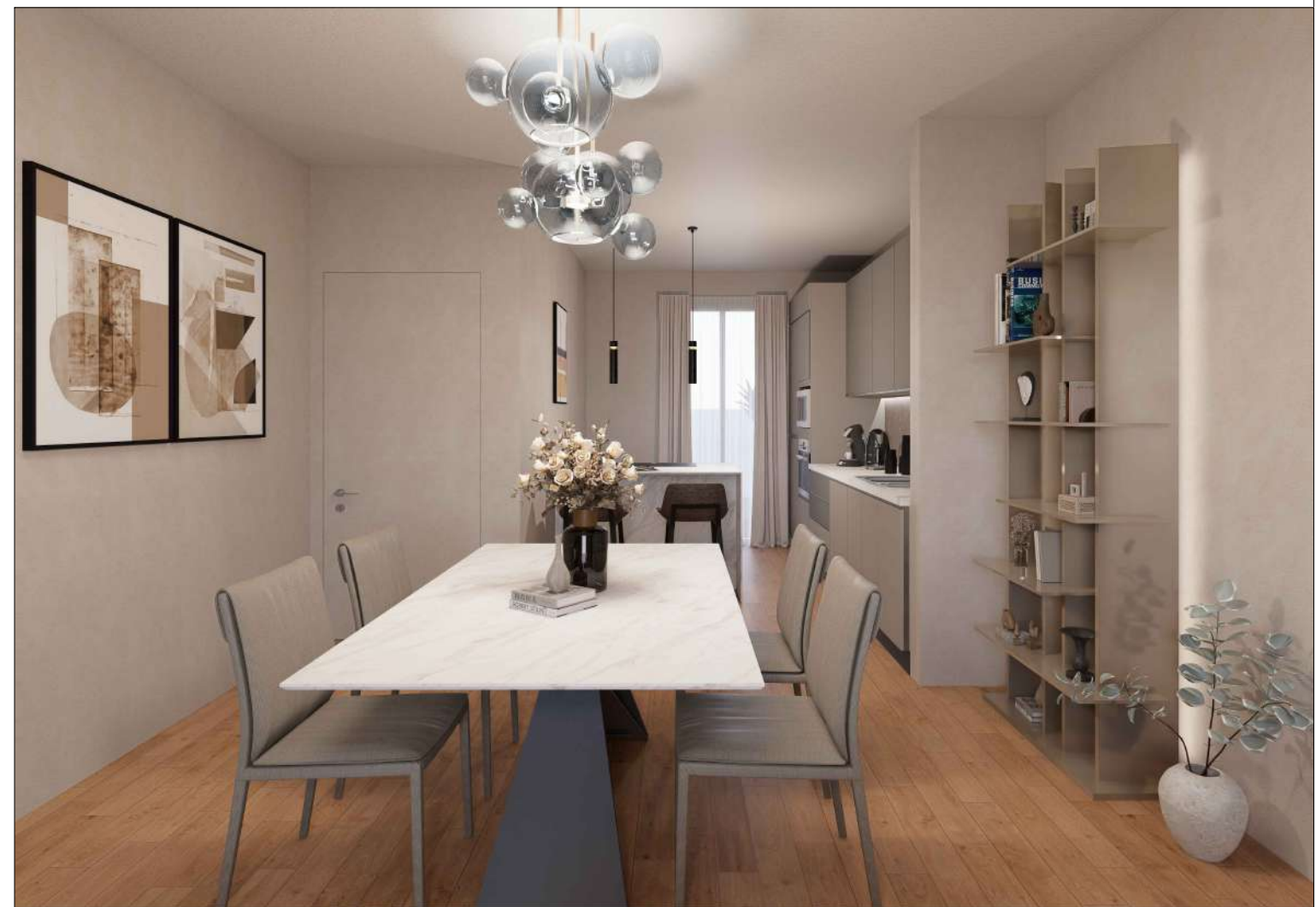


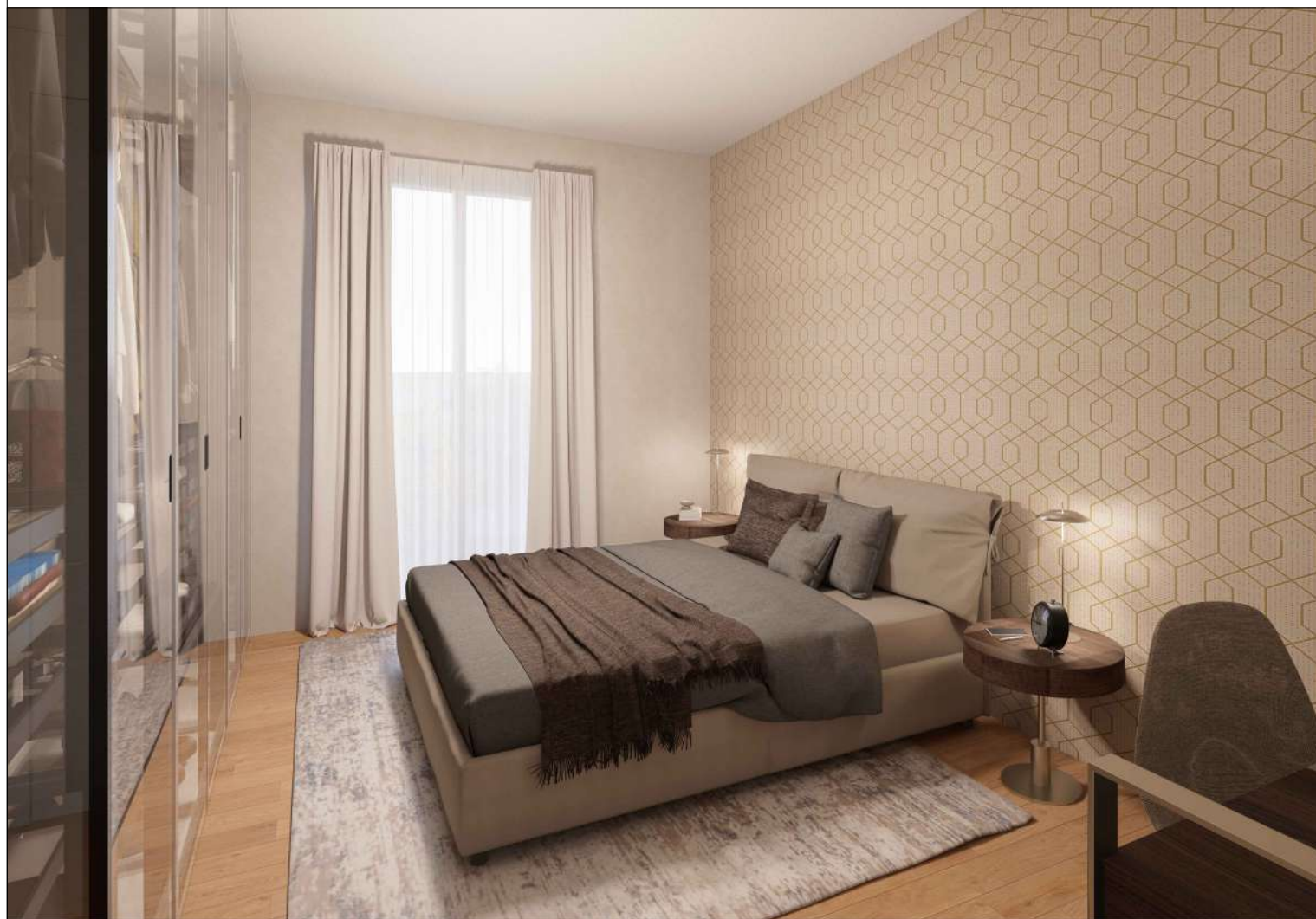


## UNITA' N°4 - PIANO SECONDO



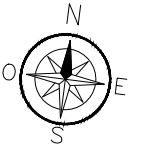
Locali:	3
Superficie abitazione:	87,66 mq
Superficie balconi:	19,47 mq
Superficie loggia:	10,60 mq
Totale mq commerciali:	103,00 mq
Totale mq sfoghi esterni:	30,07 mq (da calcolare al 50%) = 15,00 mq







## UNITA' N°5 - PIANO SECONDO



Locali:	3
Superficie abitazione:	93,18 mq
Superficie balconi:	20,66 mq
Superficie loggia:	10,80 mq
Totale mq commerciali:	109,00 mq
Totale mq sfoghi esterni:	26,00 mq (da calcolare al 30%) = 15,70 mq













